

TRANSPORT

Who has?

**Karty zostały wykonane przeze mnie. Jeśli chcesz udostępnić moje materiały pamiętaj o podaniu źródła. Gra przeznaczona jest do Twojego użytku, na potrzeby zajęć z uczniami, bądź jako rozrywka w domu.  
Pozdrawiam Aleksandra**

[aleksenglishforu.org](http://aleksenglishforu.org)



**START**  
**WHO HAS?**

**a car**

I HAVE...



WHO HAS...  
a lorry

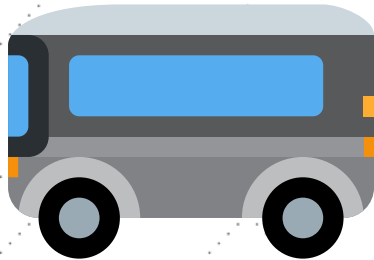
**I HAVE...**



**WHO HAS...**

a bus

I HAVE...



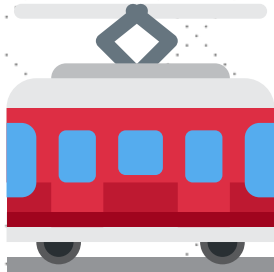
WHO HAS...  
a train

I HAVE...



WHO HAS...  
a tram

I HAVE...



WHO HAS...  
a taxi cap



**I HAVE...**



**WHO HAS...**  
a ballon

**I HAVE...**



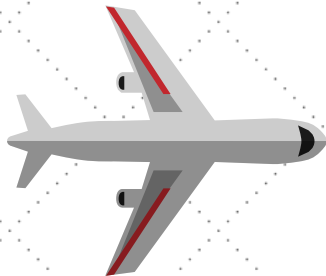
**WHO HAS...**  
a tractor

I HAVE...



WHO HAS...  
a plane

**I HAVE...**



**WHO HAS...**  
a helicopter

I HAVE...



WHO HAS...  
a ferry

I HAVE...



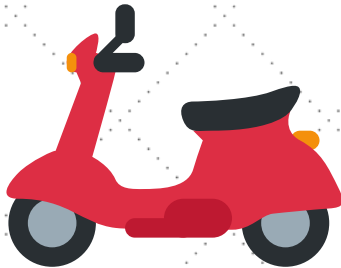
WHO HAS...  
a boat

**I HAVE...**



**WHO HAS...**  
a motorbike

I HAVE...

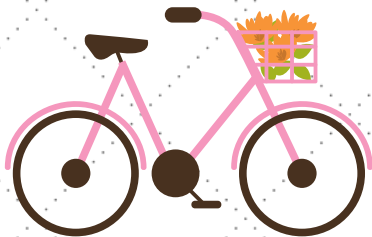


WHO HAS...

a bike



I HAVE...



WHO HAS...  
double-decker

I HAVE...



WHO HAS...  
underground

I HAVE...



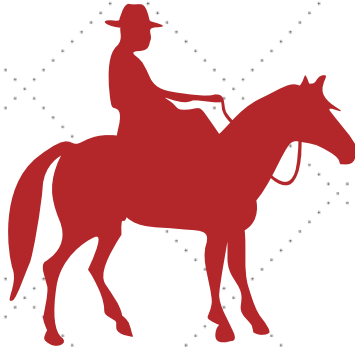
FINISH

A thick red octagonal border frames the central text. The background features a repeating pattern of dotted lines forming a diamond or grid shape.

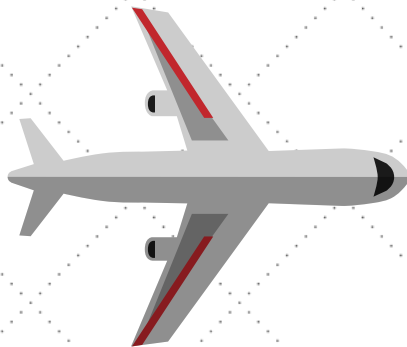
# **USEFUL PHRASES**



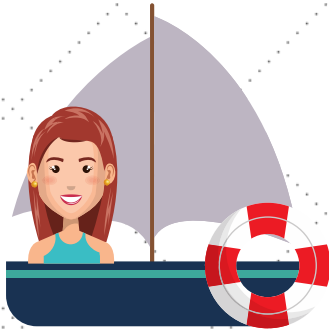
**DRIVE A CAR**



**RIDE A HORSE**



**FLY A PLANE**

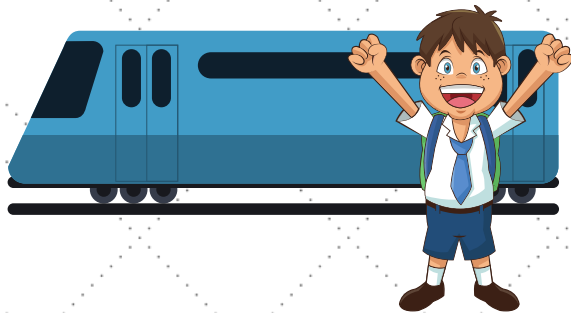


SAIL A BOAT





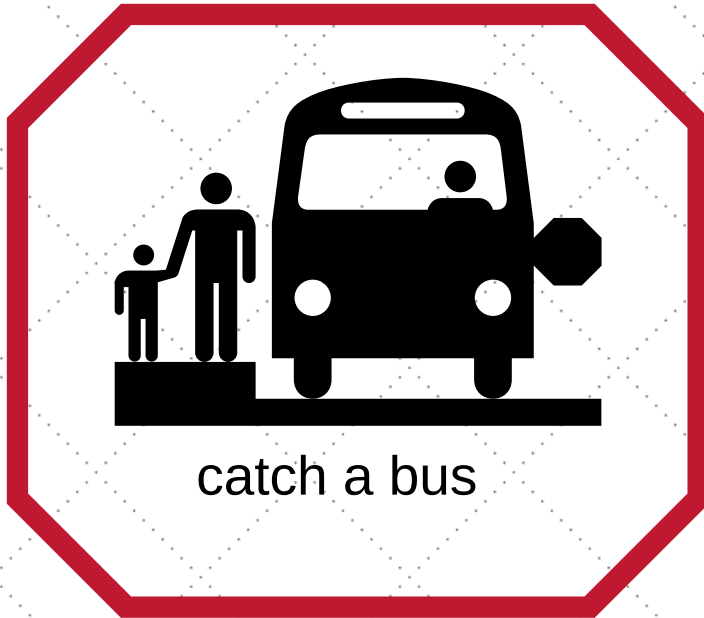
ride a bike



ride on a train



take a taxi



catch a bus

